



● Advantage Tactile Systems  
 ADVANTAGE TACTILE SYSTEMS, ADVANTAGE  
 HYBRID TACTILE SYSTEMS AND THE TWO AND THREE  
 DIMENSIONAL DESIGNS ON THE TILE BETWEEN AND ON THE  
 DIMES ARE TRADEMARKS OF ADVANTAGE TACTILE SYSTEMS  
 INC.  
 PATENTS MAY APPLY  
 U.S. PATENT NO. 5,775,385; 6,449,790; 6,895,622; 7,000,279  
 and 7,690,082.  
 US PATENTS PENDING 12/214,452; 12/721,279; 14/349,549;  
 14/376,586; AND 62/086,707.  
 CAN PATENTS PENDING CA 6558211  
 CA 2755566; CA 2820541 and CA 2854358  
 MANUFACTURED AND DISTRIBUTED BY  
 ADVANTAGE TACTILE SYSTEMS INC.  
 KENNETH E. SZEKELY

**MATERIAL LIST**

ITEM	DESCRIPTION	PART NO.	QTY
1	CAST IRON TWSI PLATE	ADV-CI-2435R	1
2			
3			
4			
5			

**REFERENCE DRAWINGS**

DWG. NO.	DESCRIPTION

No.	DATE	REVISION	APP.

SCALE: AS NOTED

DESIGNED BY	DATE
K.S.	09/15

DRAWN BY	DATE
D.S.	09/15

CHECKED BY	DATE
DD	09/15

PROJECT NUMBER: \_\_\_\_\_

TITLE: TWSI

PART NO.: ADV-CI-2435R

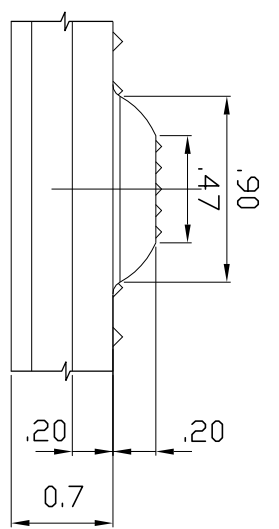
WIRING: \_\_\_\_\_

SUBJECT: GRAY CAST IRON/ASTM A48 CLASS 35B.

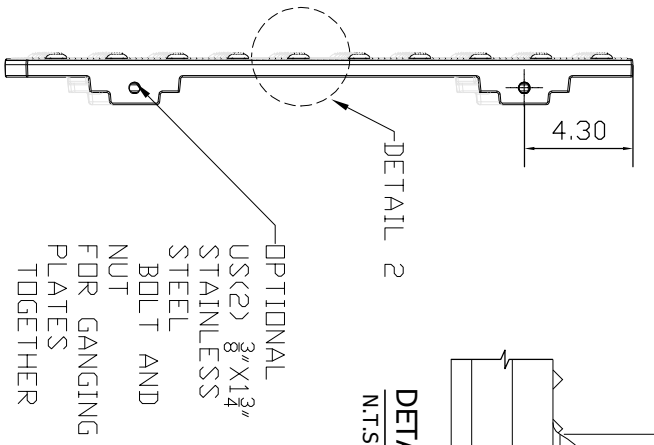


PROJECT: ADVANTAGE CAST IRON  
 DETECTABLE/TACTILE WARNING  
 SURFACE INDICATOR PLATE  
 2435R

DRAWING NO.	SHT. NO.	REV. NO.
ADV-CI-USA TILES	0	0

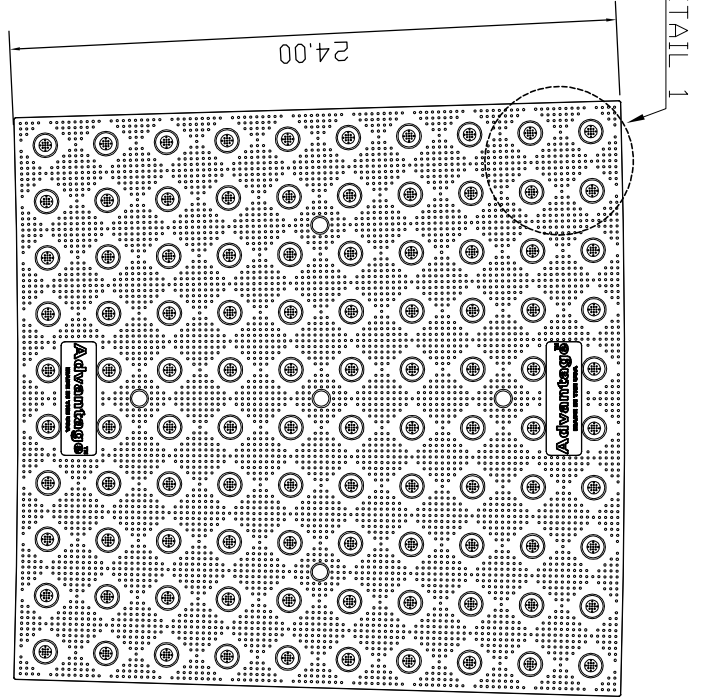


**DETAIL 2 (TYPICAL DOME SECTION)**  
N.T.S.

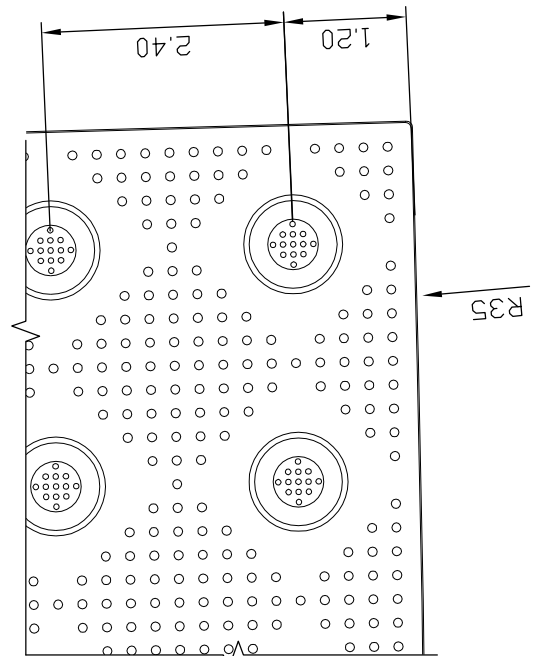
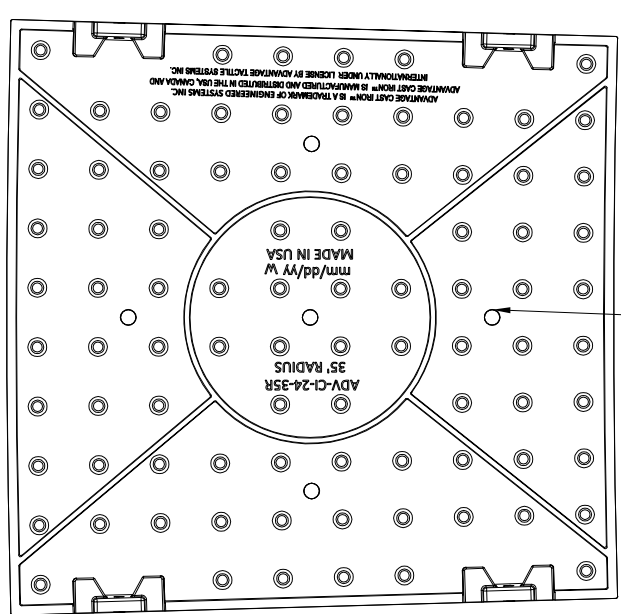


**ELEVATION VIEW 1**  
N.T.S.

OPTIONAL  
 US(2) 3/8" X 1/4"  
 STAINLESS  
 STEEL  
 BOLT AND  
 NUT  
 FOR GANGING  
 PLATES  
 TOGETHER



**TOP PLAN VIEW**  
SCALE 1-1/2"  
VENT HOLE  
(TYPE, 5 LOCATIONS)



**DETAIL 1**  
SCALE 6" = 1'-0"

**BOTTOM PLAN VIEW**  
SCALE 1-1/2"

ADVANTAGE CAST IRON™ IS A TRADEMARK OF ENGINEERED SYSTEMS INC.  
 ADVANTAGE CAST IRON™ IS MANUFACTURED IN THE USA, CANADA AND  
 RETRIBUTIVELY UNDER LICENSE BY ADVANTAGE TACTILE SYSTEMS INC.  
 MADE IN USA  
 ADV-CI-24-35R  
 35" RADIUS  
 m/dd/yy W