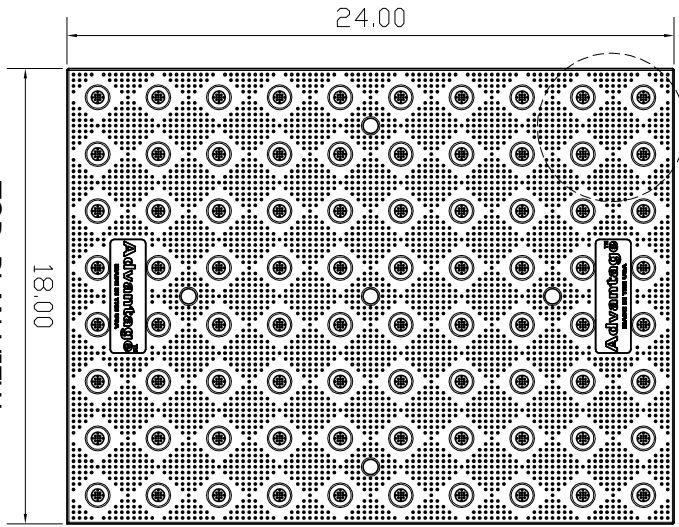
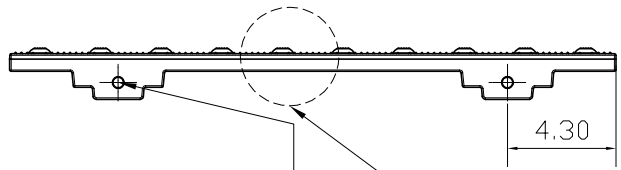


DETAIL 1

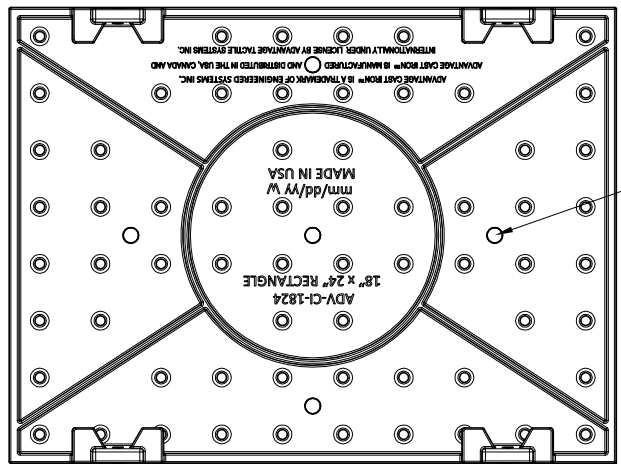
VENT HOLE
(TYPE, S LOCATIONS)



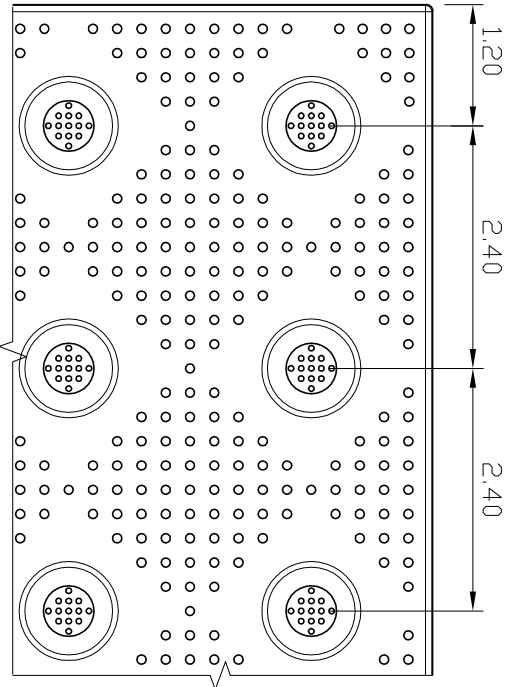
TOP PLAN VIEW
SCALE 1-1/2"



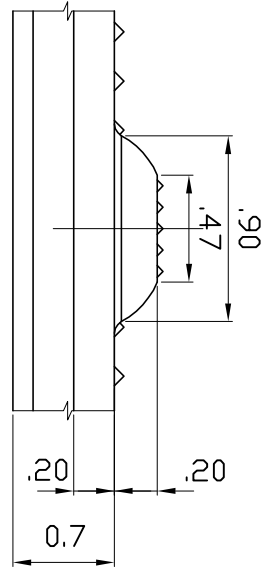
ELEVATION VIEW 1
N.T.S.



BOTTOM PLAN VIEW
SCALE 1-1/2"



DETAIL 1
N.T.S.



DETAIL 2 (TYPICAL DOME SECTION)
N.T.S.

Advantage Tactile Systems
 Advantage Advantage Tactile Systems, Advantage Hybrid Tactile Systems and the two and three dimensional designs on the tile between and on the domes are trademarks of Advantage Tactile Systems Inc.
 PATENTS MAY APPLY
 U.S. PATENT NO. 5,775,385; 6,449,790; 6,895,622; 7,000,279 and 7,690,062.
 US PATENTS PENDING: 12/214,452; 12/721,279; 14/249,549; 14/376,386; AND 62/086,707.
 CAN. PATENTS PENDING: CA 6558211; CA 2755566; CA 2820541 and CA 2854358
 MANUFACTURED AND DISTRIBUTED BY
 ADVANTAGE TACTILE SYSTEMS INC.
 KENNETH E. SEKELY

MATERIAL LIST

ITEM	DESCRIPTION	PART NO.	QTY
1	1824 CAST IRON TWSI PLATE	ADV-CI-1824	1
2			
3			
4			
5			

REFERENCE DRAWINGS

DWG. NO.	DESCRIPTION

No.	DATE	REVISION	APP.

SCALE: AS NOTED

DESIGNED BY	K.S.	DATE	09/15
DRAWN BY	D.S.	DATE	09/15
CHECKED BY	DD	DATE	09/15

TITLE	PART NO.
TWSI	ADV-CI-1824

WATERIAL: GRAY CAST IRON/ASTM A48 CLASS 35B.
 SUBJECT:



PROJECT: ADVANTAGE CAST IRON
 DETECTABLE/TACTILE WARNING
 SURFACE INDICATOR PLATE
 18"X24"

DRAWING NO.	SHT. NO.	REV. NO.
ADV-CI-USA TILES	0	0