

● Advantage Facilitate Systems, Advantage Advantage Facilitate Systems, Advantage Hybrid Facilitate Systems and the two and three dimensional designs on the tile between and on the domes are trademarks of Advantage Facilitate Systems Inc.
 PATENTS MAY APPLY
 U.S. PATENT NO. 5,775,585; 6,449,790; 6,895,622; 7,000,279 and 7,690,062.
 US PATENTS PENDING: 12/974,452; 12/721,279; 14/349,549; 14/376,586; AND 62/086,707.
 CAN. PATENTS PENDING: CA 6558211, CA 2755566, CA 2820541 and CA 2854358
 MANUFACTURED AND DISTRIBUTED BY
 ADVANTAGE FACILITATE SYSTEMS INC.
 KENNETH E. SZEKELY

MATERIAL LIST

ITEM	DESCRIPTION	PART NO.	QTY
1	CAST IRON TWSI PLATE	ADV-CI-2420R	1
2			
3			
4			
5			

REFERENCE DRAWINGS

DWG. NO.	DESCRIPTION

No.	DATE	REVISION	APP.

SCALE: AS NOTED

DESIGNED BY	DATE
K.S.	09/15

DRAWN BY	DATE
D.S.	09/15

CHECKED BY	DATE
DDJ	09/15

PROJECT NUMBER: _____

TITLE: TWSI

PART NO.: ADV-CI-2420R

WITNESSED BY: _____

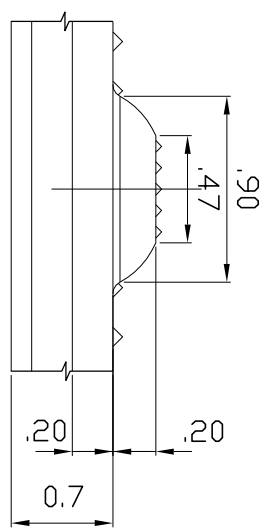
DATE: _____

SUBJECT: GRAY CAST IRON/ASTM A48 CLASS 35B

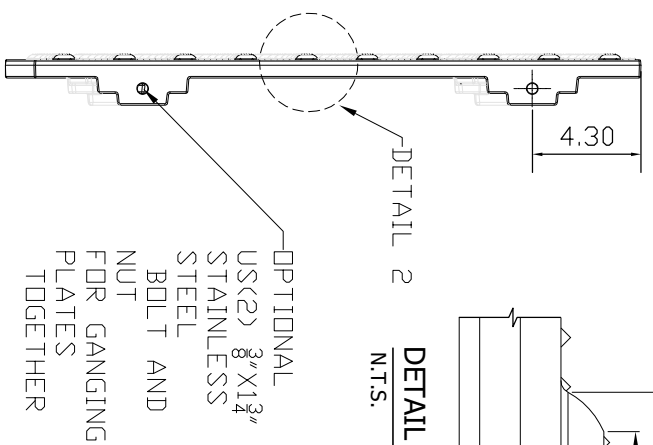


PROJECT: ADVANTAGE CAST IRON
 DETECTABLE/TACTILE WARNING
 SURFACE INDICATOR PLATE
 2420R

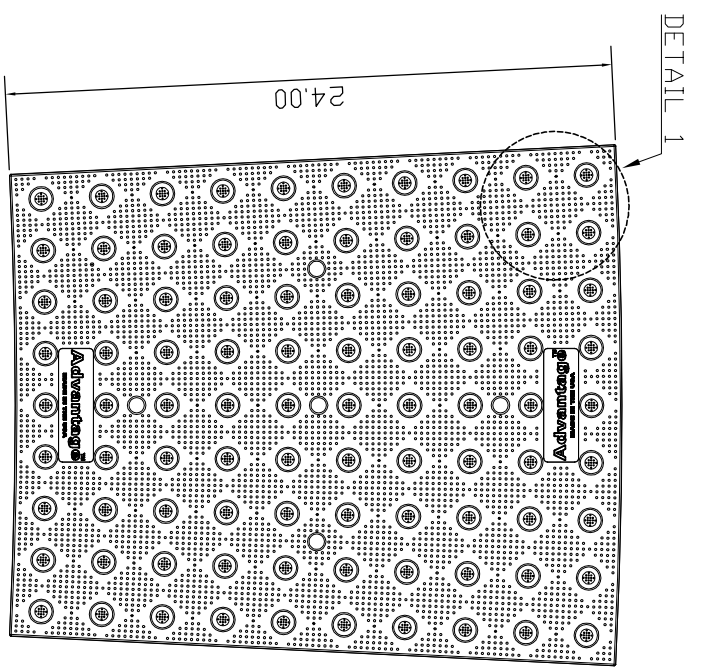
DRAWING NO.	SHEET NO.	REV. NO.
ADV-CI-USA TILES	0	0



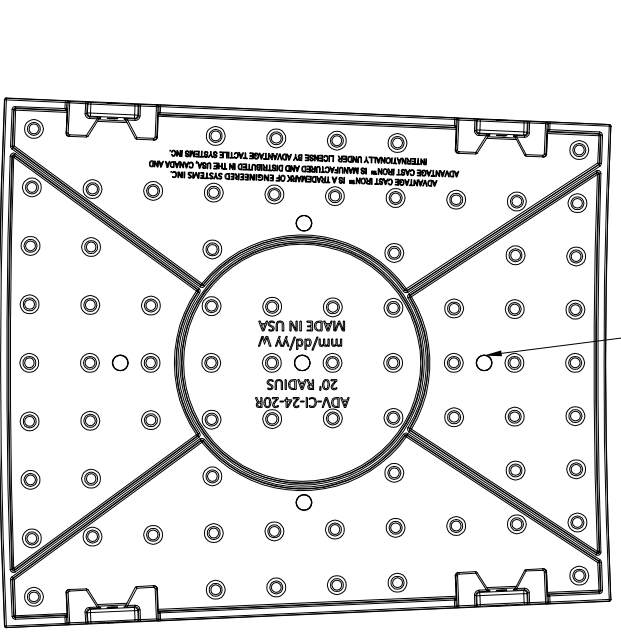
DETAIL 2 (TYPICAL DOME SECTION)
N.T.S.



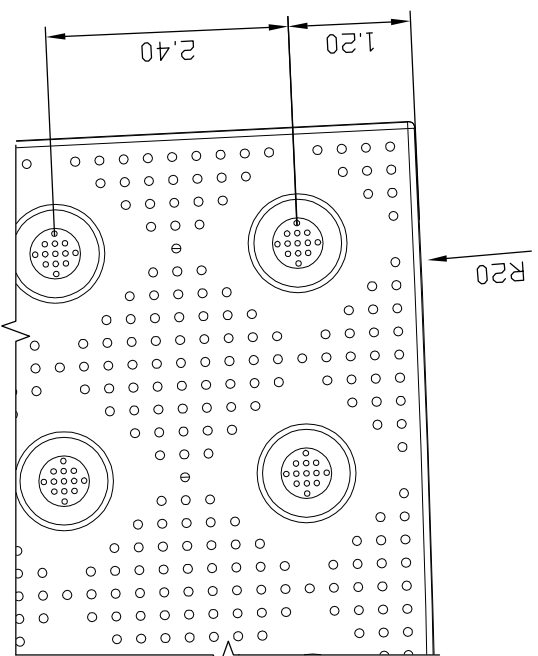
ELEVATION VIEW 1
N.T.S.



TOP PLAN VIEW
SCALE 1-1/2"



BOTTOM PLAN VIEW
SCALE 1-1/2"



DETAIL 1
SCALE 6" = 1'-0"