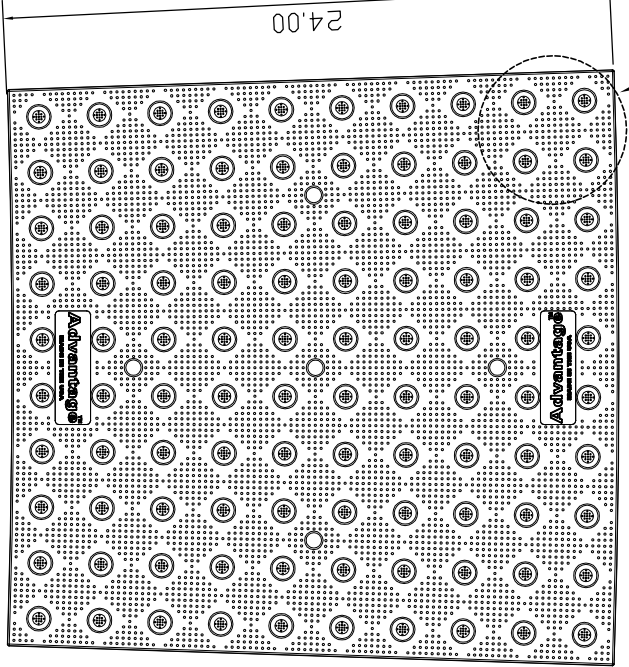
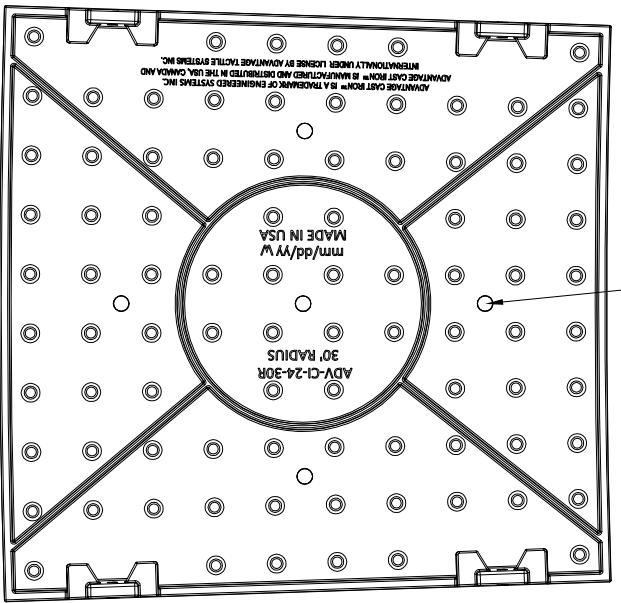


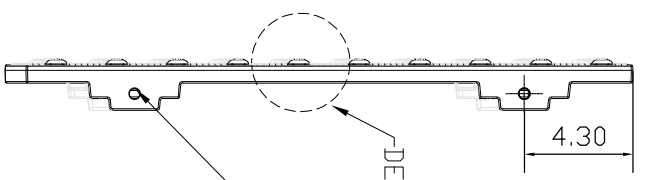
DETAIL 1



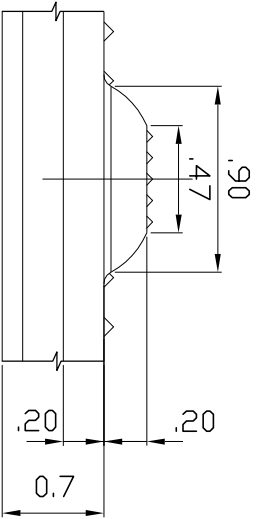
VENT HOLE
(TYPE, 5 LOCATIONS)
TOP PLAN VIEW
SCALE 1-1/2"



BOTTOM PLAN VIEW
SCALE 1-1/2"

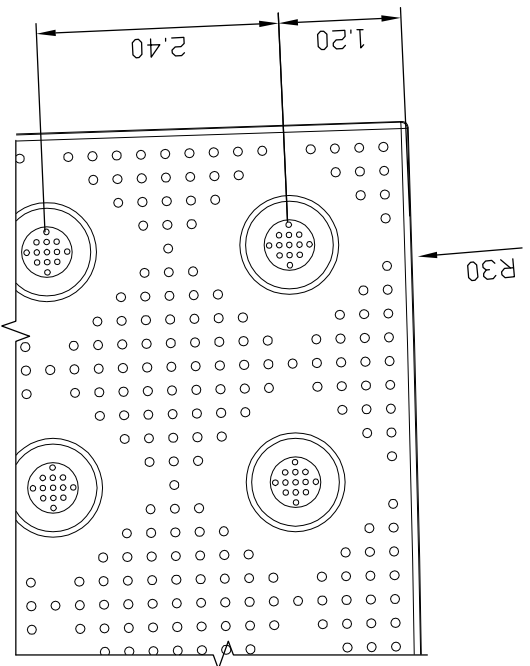


ELEVATION VIEW 1
N.T.S.



DETAIL 2 (TYPICAL DOME SECTION)
N.T.S.

OPTIONAL
US(2) 8 X 13"
STAINLESS
STEEL
BOLT AND
NUT
FOR GANGING
PLATES
TOGETHER



DETAIL 1
SCALE 6" = 1'-0"



Advantage TacTile Systems
ADVANTAGE TACTILE SYSTEMS, ADVANTAGE
HYBRID TACTILE SYSTEMS AND THE TWO AND THREE
DIMENSIONAL DESIGNS ON THE TILE BETWEEN AND ON THE
TILES ARE TRADEMARKS OF ADVANTAGE TACTILE SYSTEMS
INC.
PATENTS MAY APPLY
U.S. PATENT NO. 5,775,585; 6,449,790; 6,895,622; 7,000,279
and 7,690,082
US PATENTS PENDING 12/214,452; 12/721,279; 14/349,549;
14/376,586; AND 62/086,707.
CAN. PATENTS PENDING CA 6558211;
CA 2755566; CA 2820541 and CA 2854358
MANUFACTURED AND DISTRIBUTED BY
ADVANTAGE TACTILE SYSTEMS INC.
KENNETH E. SZEKELY

MATERIAL LIST

ITEM	DESCRIPTION	PART NO.	QTY
1	CAST IRON TWSI PLATE	ADV-CI-2430R	1
2			
3			
4			
5			

REFERENCE DRAWINGS

DWG. NO.	DESCRIPTION

No.	DATE	REVISION	APP.

SCALE: AS NOTED

DESIGNED BY	DATE
K.S.	09/15

DRAWN BY	DATE
D.S.	09/15

CHECKED BY	DATE
DD	09/15

TITLE: TWSI

PART NO. ADV-CI-2430R

WIRING: GRAY CAST IRON/ASTM A48 CLASS 35B

SUBJECT:

PROJECT: ADVANTAGE CAST IRON
DETECTABLE/TACTILE WARNING
SURFACE INDICATOR PLATE
2430R

DRAWING NO.	SHT. NO.	REV. NO.
ADV-CI-USA TILES	0	0