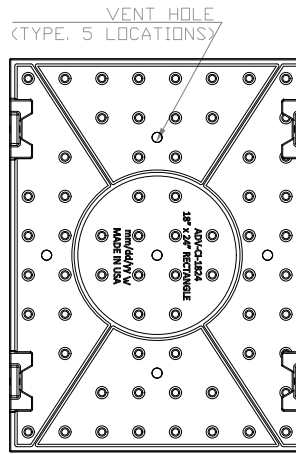
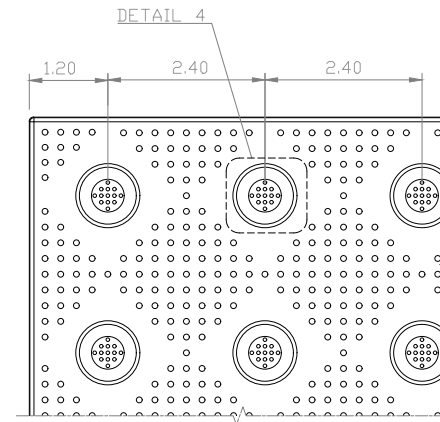


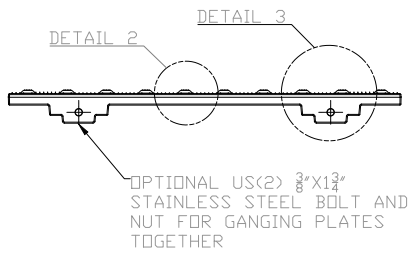
TOP PLAN VIEW



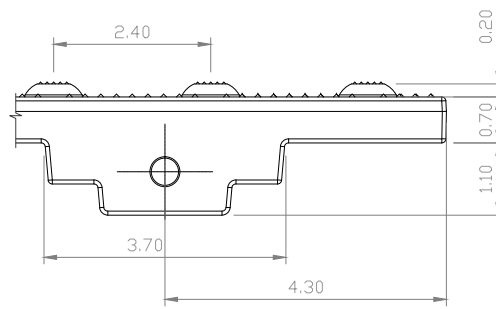
BOTTOM PLAN VIEW



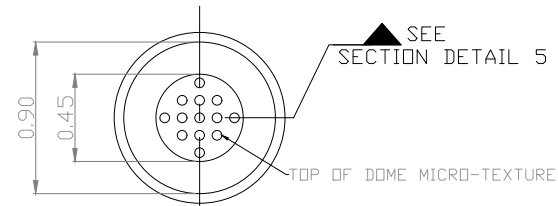
DETAIL 1



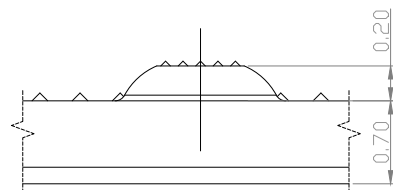
ELEVATION VIEW 1



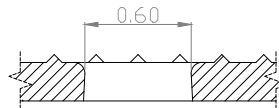
DETAIL 3



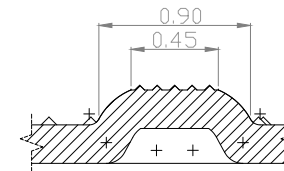
DETAIL 4 (TYPICAL DOME PLAN)



DETAIL 2 (TYPICAL DOME)



DETAIL 6



DETAIL 5 (TYPICAL DOME SECTION)

MATERIAL LIST

ITEM	DESCRIPTION	PART NO.	QTY
1	18X24 CAST IRON TWSI PLATE	ADV-CI-1824	1
2			
3			
4			
5			

REFERENCE DRAWINGS

DWG. NO.	DESCRIPTION

WEIGHT: 35.2 lbmass

TOLERANCES:

- LENGTH/WIDTH = 3.175mm [0.125"]
- THICKNESS = 1.52mm [0.060"]
- DOME HT = 0.64mm [0.025"]
- DOME Ø = 0.64mm [0.025"]
- WARPAGE = 3.175mm [0.125"]
- TILES ABUTTING EACH OTHER SHOULD BE LEVELED TO WITHIN 3.175mm [0.125"]

No.	DATE	REVISION	APP.

SCALE: N.T.S.

DESIGNED BY	K.S.	DATE
DRAWN BY	M.T.	DATE 07/15/2024
CHECKED BY	DD	DATE

PROJECT MANAGER	
TRADE	TWSI
PART NO.	ADV-CI-1824

MATERIAL: GRAY CAST IRON/ASTM A48 CLASS 35B  
SUBJECT:

TACTILE TILE  
DETECTABLE WARNING  
SURFACE SYSTEM

PROJECT: ADVANTAGE CAST IRON  
TACTILE WALKING SURFACE  
INDICATOR PLATE  
18"X24"

DRAWING NO.	SHT. NO.	REV. NO.
ADV-CI-1824-MKT	0	01