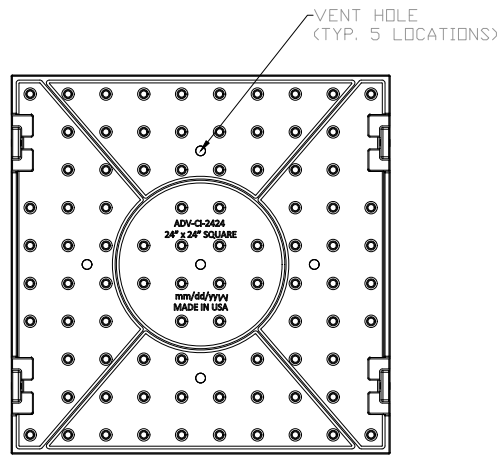
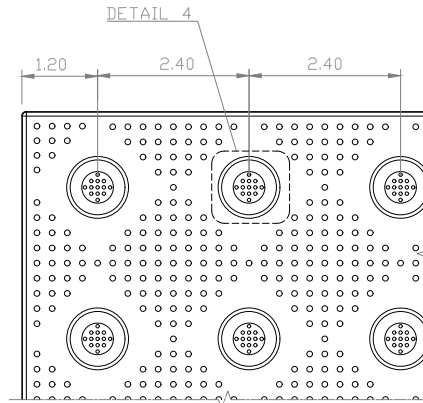


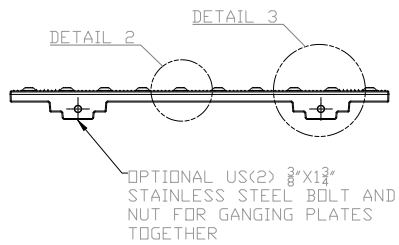
TOP PLAN VIEW



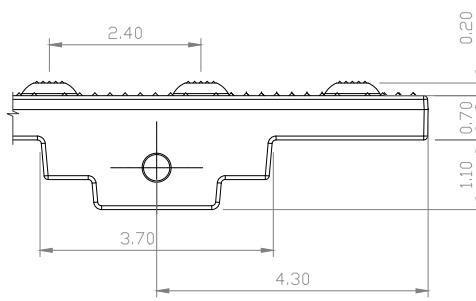
BOTTOM PLAN VIEW



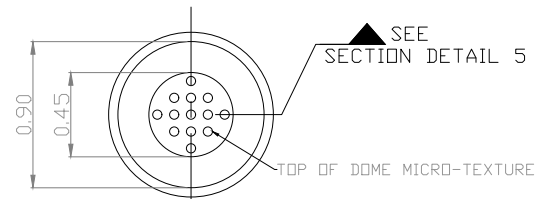
DETAIL 1



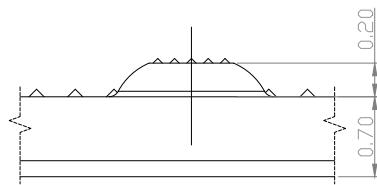
ELEVATION VIEW 1



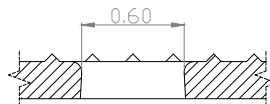
DETAIL 3



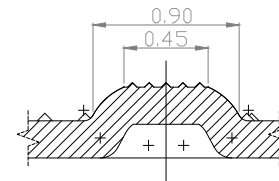
DETAIL 4 (TYPICAL DOME PLAN)



DETAIL 2 (TYPICAL DOME)



DETAIL 6



DETAIL 5 (TYPICAL DOME SECTION)

MATERIAL LIST

ITEM	DESCRIPTION	PART NO.	QTY
1	24X24 CAST IRON TWSI PLATE	ADV-CI-2424	1
2			
3			
4			
5			

REFERENCE DRAWINGS

DWG. NO.	DESCRIPTION

ESTIMATED WEIGHT: 37 LBS
 COMPLIES WITH: CSA B651
 ISO 23599 & AODA

No.	DATE	REVISION	APPR.

SCALE: N.T.S.

DESIGNED BY	K.S.	DATE
DRAWN BY	M.T.	DATE 07/15/2024
CHECKED BY	DD	DATE

PROJECT MANAGER	
TRADE	TWSI
PART NO.	ADV-CI-2424
MATERIAL	GREY CAST IRON/ASTM A48 CLASS 35B.
SUBJECT	

TACTILE TILE
 DETECTABLE WARNING
 SURFACE SYSTEM

PROJECT
 ADVANTAGE CAST IRON
 TACTILE WALKING SURFACE
 INDICATOR PLATE
 24"X24"

DRAWING NO.	SHT. NO.	REV. NO.
ADV-CI-USA TILES	0	01