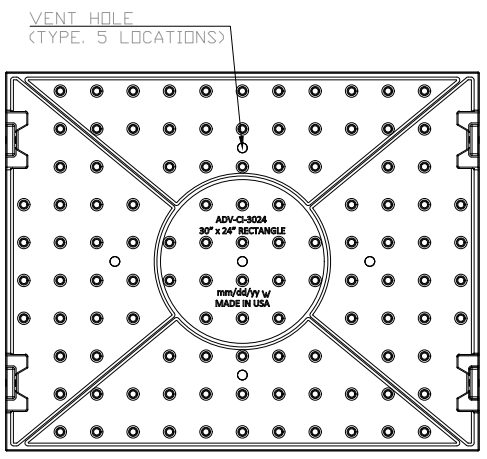
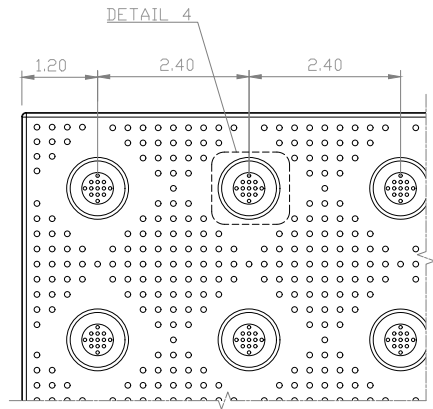


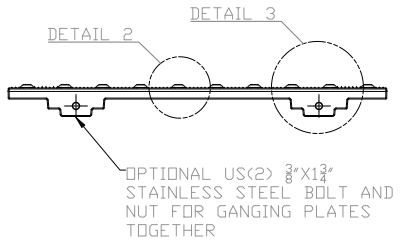
**TOP PLAN VIEW**



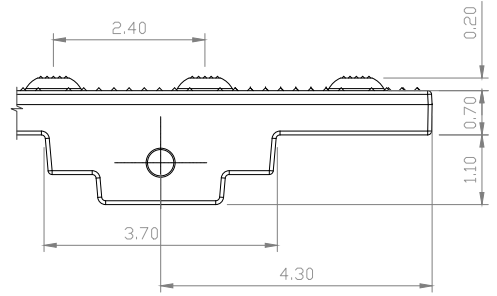
**BOTTOM PLAN VIEW**



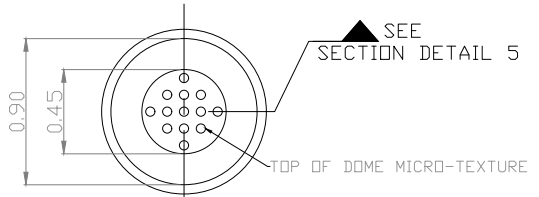
**DETAIL 1**



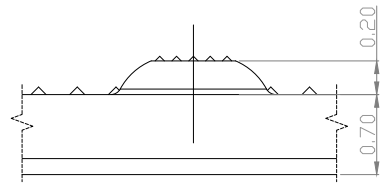
**ELEVATION VIEW 1**



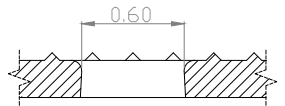
**DETAIL 3**



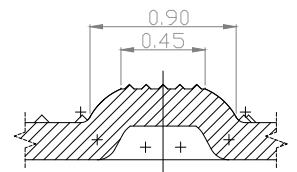
**DETAIL 4 (TYPICAL DOME PLAN)**



**DETAIL 2 (TYPICAL DOME)**



**DETAIL 6**



**DETAIL 5 (TYPICAL DOME SECTION)**

**MATERIAL LIST**

ITEM	DESCRIPTION	PART NO.	QTY
1	24X30 CAST IRON TWSI PLATE	ADV-CI-3024	1
2			
3			
4			
5			

**REFERENCE DRAWINGS**

DWG. NO.	DESCRIPTION

WEIGHT: 54.39 lbmass

**TOLERANCES:**

- LENGTH/WIDTH = 3.175mm [0.125"]
- THICKNESS = 1.52mm [0.060"]
- DOME HT = 0.64mm [0.025"]
- DOME Ø = 0.64mm [0.025"]
- WARPAGE = 3.175mm [0.125"]
- TILES ABUTTING EACH OTHER SHOULD BE LEVELED TO WITHIN 3.175mm [0.125"]

NO.	DATE	REVISION	APP.

SCALE: N.T.S.

DESIGNED BY	K.N.	DATE
DRAWN BY	M.T.	DATE 07/15/2024
CHECKED BY	DD	DATE

PROJECT MANAGER	PART NO. ADV-CI-3024
TRADE TWSI	

MATERIAL: GRAY CAST IRON/ASTM A48 CLASS 35B.

SUBJECT: TACTILE TILE DETECTABLE WARNING SURFACE SYSTEM

PROJECT: ADVANTAGE CAST IRON TACTILE WALKING SURFACE INDICATOR PLATE 30'X24'

DRAWING NO. ADV-CI-3024-MKT	SHT. NO. 0	REV. NO. 01
-----------------------------	------------	-------------