

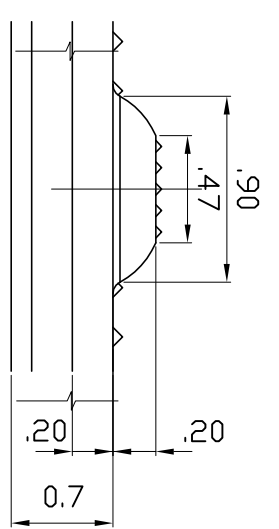
● Advantage Facilitate Systems, Advantage
 Advantage Facilitate Systems, Advantage
 Hybrid Facilitate Systems and the two and three
 dimensional designs on the tile between and on the
 domes are trademarks of Advantage Facilitate Systems
 Inc.
 PATENTS MAY APPLY
 U.S. PATENT NO. 5,775,385; 6,449,790; 6,895,622; 7,000,279
 and 7,690,862;
 US PATENTS PENDING 12/214,452; 12/721,279; 14/349,549;
 14/376,586; AND 62/086,707;
 CAN. PATENTS PENDING CA 6558211;
 CA 2755566; CA 2820541; and CA 2854358
 MANUFACTURED AND DISTRIBUTED BY
 ADVANTAGE FACILITATE SYSTEMS INC.
 KENNETH E. SZEKELY

MATERIAL LIST

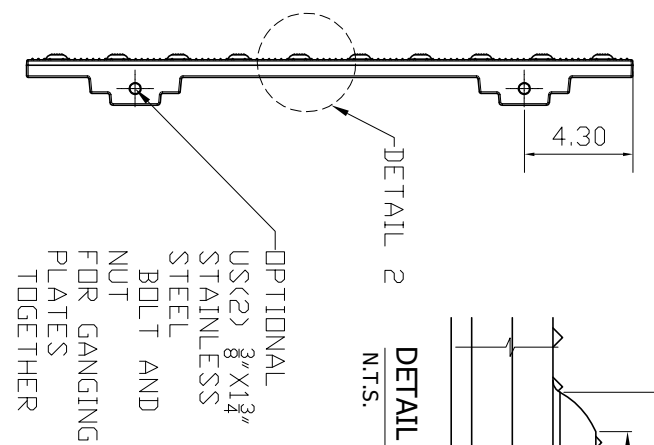
ITEM	DESCRIPTION	PART NO.	QTY
1	CAST IRON TWSI PLATE	ADV-CI-2410R	1
2			
3			
4			
5			

REFERENCE DRAWINGS

DWG. NO.	DESCRIPTION

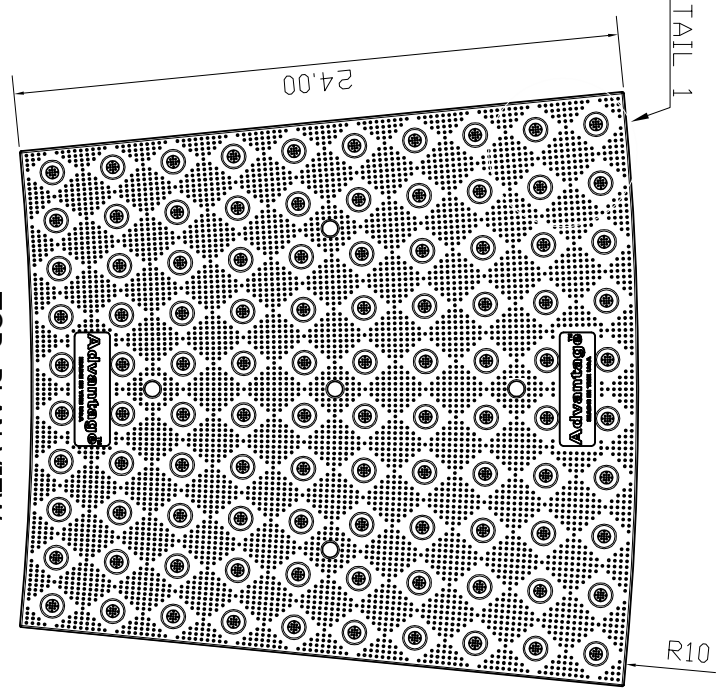


DETAIL 2 (TYPICAL DOME SECTION)
N.T.S.

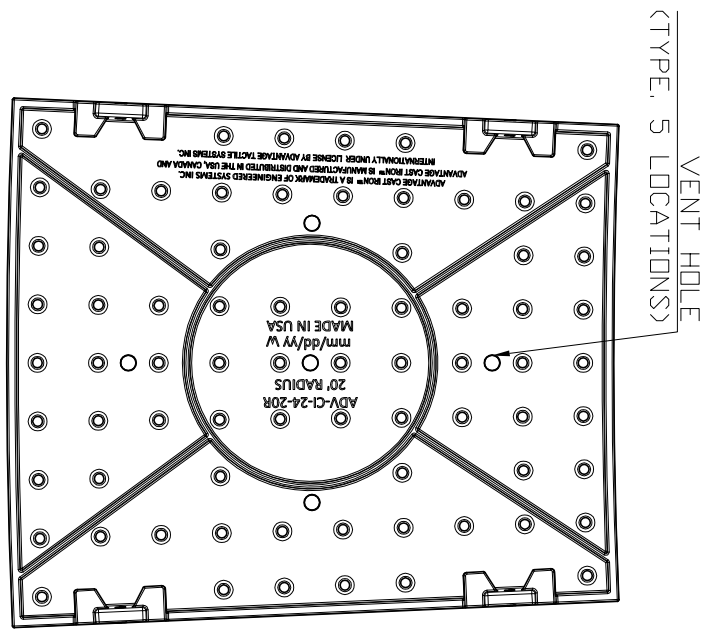


ELEVATION VIEW 1
N.T.S.

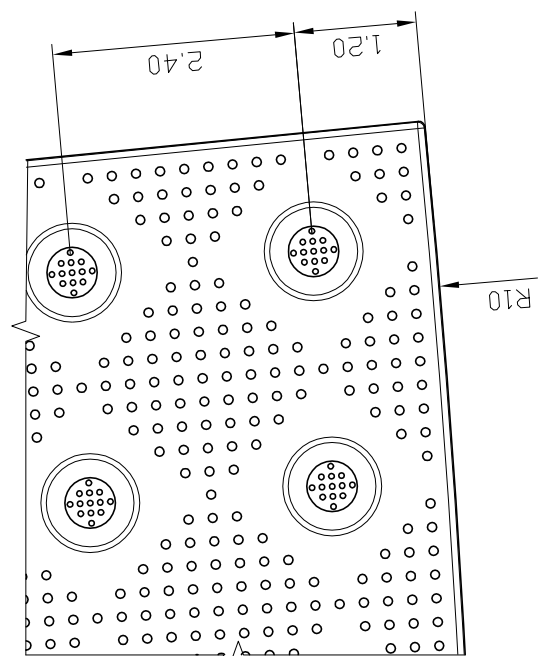
OPTIONAL
 US(2) 8"x13"
 STAINLESS
 STEEL
 BOLT AND
 NUT
 FOR GANGING
 PLATES
 TOGETHER



TOP PLAN VIEW
SCALE 1-1/2"



BOTTOM PLAN VIEW
SCALE 1-1/2"



DETAIL 1
SCALE 6" = 1'-0"

PROJECT
 ADVANTAGE CAST IRON
 DETECTABLE/TACTILE WARNING
 SURFACE INDICATOR PLATE
 2410R



TITLE
 TWSI
 PART NO. ADV-CI-2410R
 MATERIAL
 GRAY CAST IRON/ASTM A48 CLASS 35B
 SUBJECT

NO.	DATE	REVISION	APP.

SCALE
AS NOTED

DESIGNED BY	DATE
K.S.	09/15
DRAWN BY	DATE
D.S.	09/15
CHECKED BY	DATE
DD	09/15

PROJECT NUMBER

DATE

BY

FOR

OF

BY

DATE

BY

FOR

OF

BY

DATE