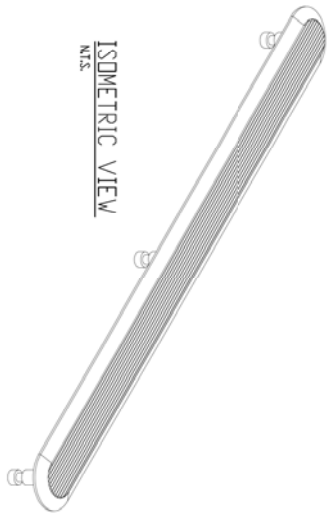


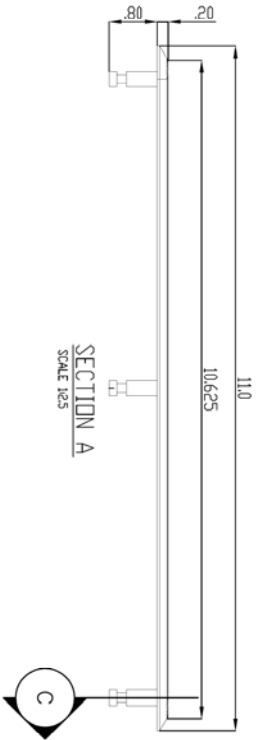
Advantage Tactile Systems
 ADVANTAGE ADVANTAGE TACTILE SYSTEMS,
 ADVANTAGE HYBRID TACTILE SYSTEMS AND THE
 TWO AND THREE DIMENSIONAL SYSTEMS ON THE TILE
 BETWEEN AND ON THE STAIRS, THE RAMPWAYS OF
 STAIRS AND THE STAIRS AND RAMPWAYS OF
 PATIENTS ROOMS IN THE USA, CANADA AND
 INTERNATIONALLY MANUFACTURED
 AND DISTRIBUTED BY ADVANTAGE TACTILE
 SYSTEMS, INC.
 © KENNETH E. SEELY



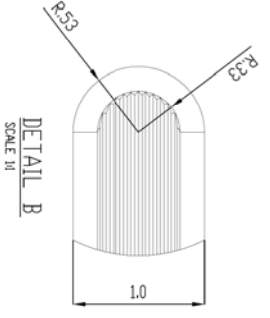
ISOMETRIC VIEW
N.T.S.



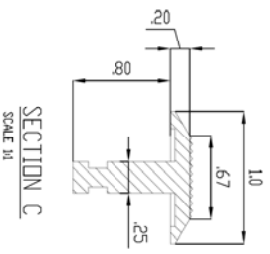
TOP VIEW
SCALE 1:25



SECTION A
SCALE 1:25



DETAIL B
SCALE 1:1



SECTION C
SCALE 1:1

ALL DIMENSIONS ARE SHOWN IN INCHES

ITEM	DESCRIPTION	PART NO.	QTY
1	Flt. Top Emergenc Bar	ADV-B-3281-N	1
2			
3			
4			
5			

REV. NO.	DESCRIPTION

NO.	REV.	REVISION	DATE
01	01/01/15	Dimensional Changes	V.S
00	21/05/13		

REVISION BY	DATE
DD	09/14/15
P.V	09/14/15
DD	09/14/15

REVISION BY	DATE
DD	09/14/15
P.V	09/14/15
DD	09/14/15

PROJECT	SCALE
ADV-B-3281-N	AS NOTED
ADVANTAGE DIE	
TACTILE WALKING SURFACE INDICATORS	
STAINLESS FLAT-TOPPED GUIDANCE	
BRV W/LINEAR GROOVES	
11037-K108	

REV. NO.	REV. NO.	REV. NO.
01	01	01